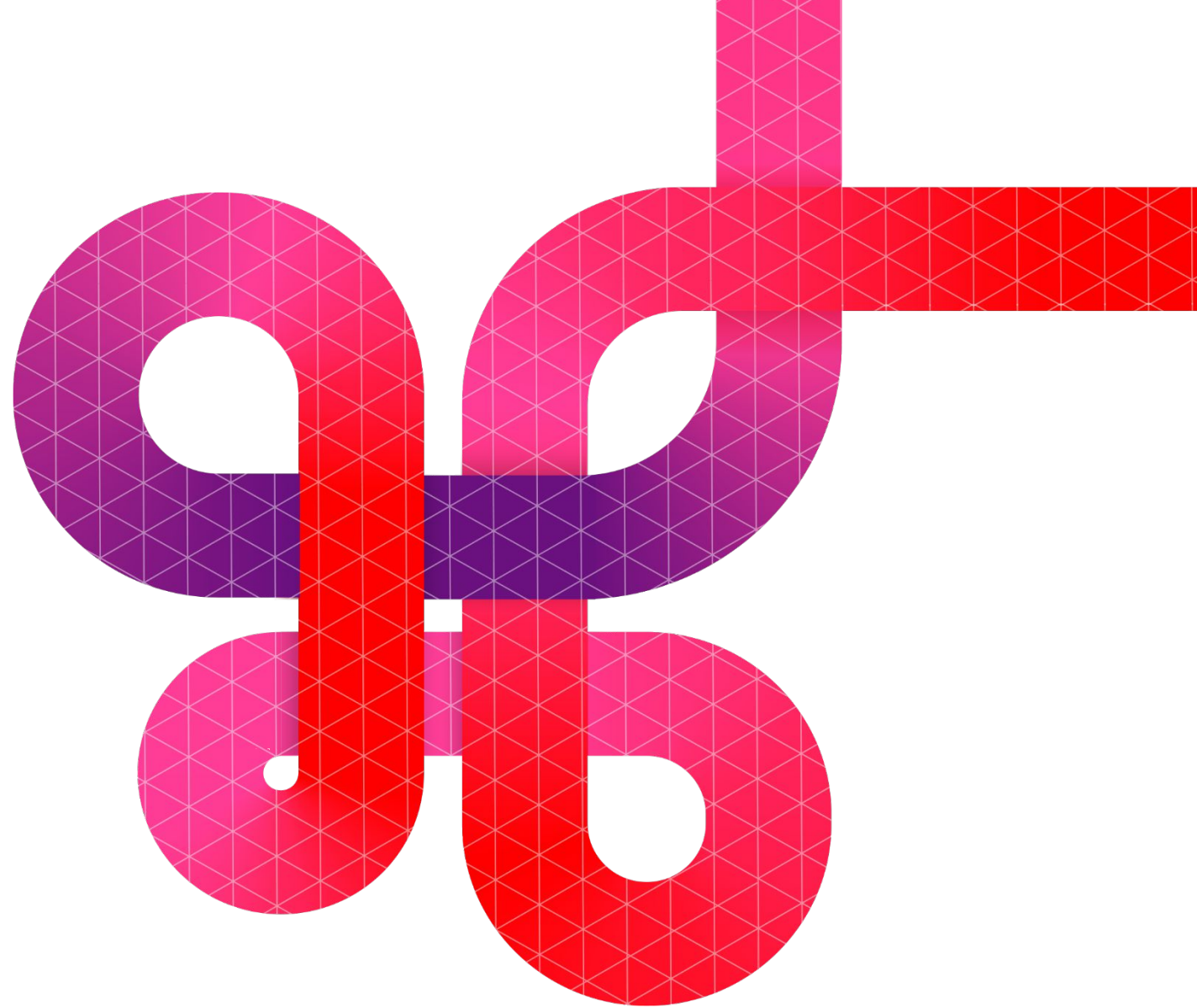




# **Celonis Process Mining 4.7.2 Release Notes**



# Disclaimer

# Updating to Celonis Process Mining 4.7.2

Please be aware that before updating to Celonis Process Mining 4.7.2, it is **required to install and run version 4.7.1.**

For detailed information and further required steps, please refer to the **Celonis 4.7.2 - Update Guide 1.13.**

# Important changes

# Deprecation note: legacy audit logger

With Celonis Process Mining 4.7.2, we are deprecating the legacy audit logger configured in `<installDir>/component_configurations/audit-logging.properties`. In case the audit logs are used in your installation, a migration of the audit logging configuration to the new `audit-logging-advanced.properties` file is required.

**For detailed information and further required steps, please refer to the Celonis 4.7.2 – Update Guide 1.13. Not following the instructions will lead to no audit logs being written.**

# Amazon Athena JDBC driver

With Celonis Process Mining 4.7.2, we no longer distribute the Amazon Athena JDBC driver (`com.simba.athena.jdbc.Driver`) with the application. If you are currently connecting to Amazon Athena, please follow the instructions in the Update Guide 1.13 to deploy the Amazon Athena JDBC driver. This change is required to ensure full version compatibility.

**For detailed information and further required steps, please refer to the Celonis 4.7.2 – Update Guide 1.13. Not following this instruction will lead to all Amazon Athena connections failing.**

# Time zone information in log files

The log format of the stdout log files (located in <installDir/logs>) and the advanced audit logs was adapted from *yyyy-MM-dd HH:mm:ss* to *yyyy-MM-ddT'HH:mm:ss.SSSXXX*, adding information about the application server time zone.

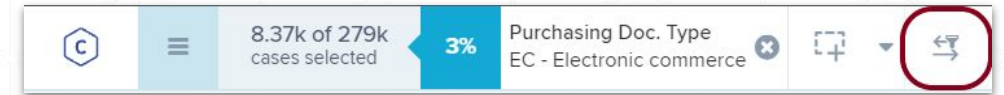
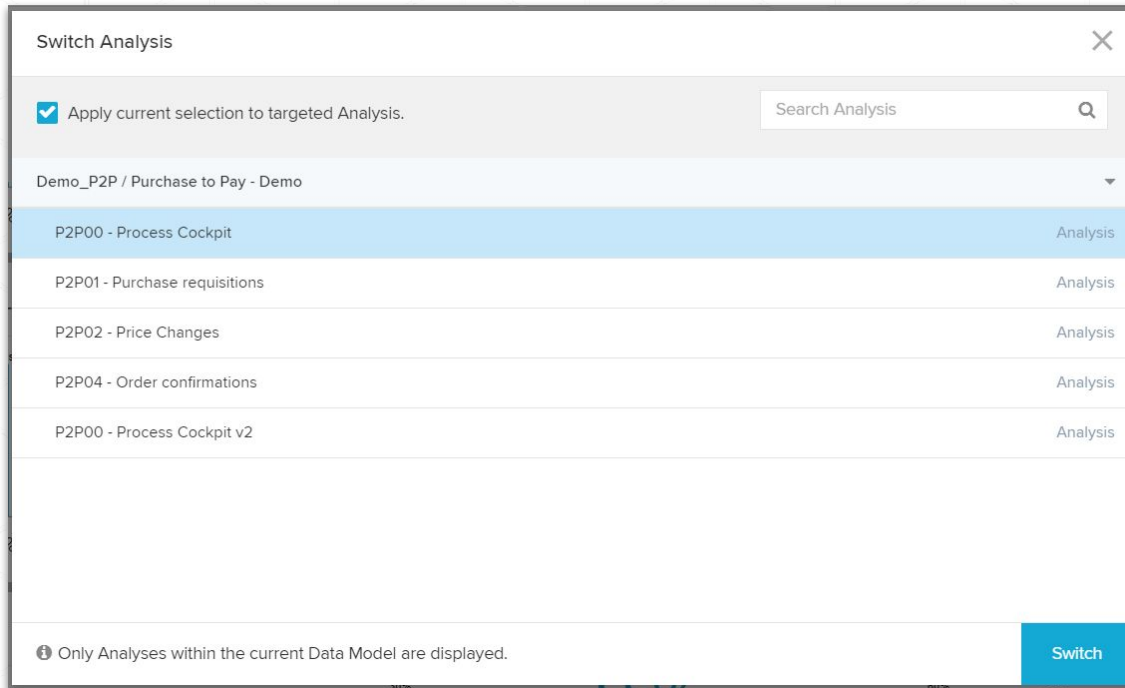
**For detailed information and further required steps, please refer to the Celonis 4.7.2 - Update Guide 1.13.**

# Analysis improvements



# Switching analyses with selections

Since Celonis Process Mining 4.7.2, it is possible to browse and open another analysis from the current one.



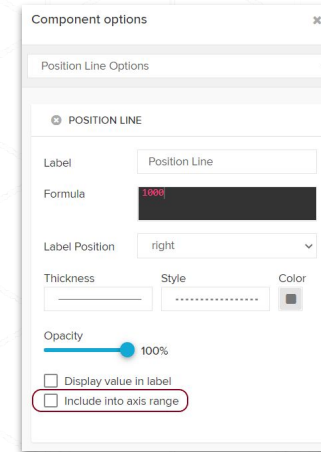
Doing so, it is also possible to forward the current selections to the target Analysis if they are connected to the same data model.

1. Access the pop-up menu
2. Select, whether the current selections should be carried to the target analysis
3. Browse through the analyses
4. Select and go to analysis

# Other changes

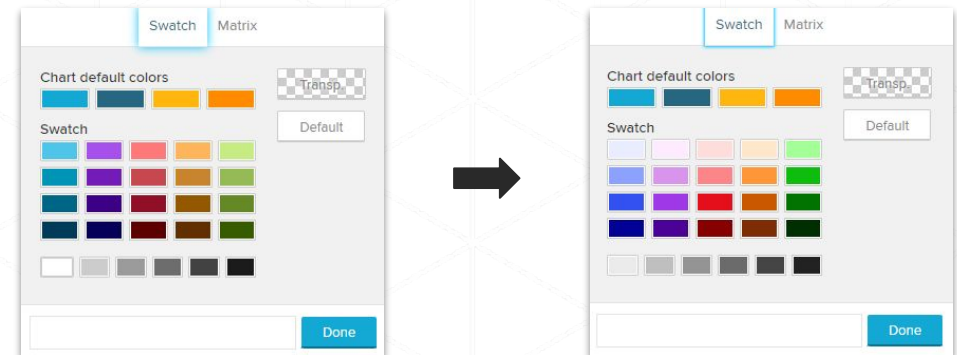
## "Include into axis range" for position lines in Scatter Plots

The checkbox to include position lines into the axis range was added to the Scatter Plot component. When this option is active, the axis range will always be calculated to include the position line.



## Chart color swatch

The color swatch of all chart components was optimized for colorblindness.





# Other changes

## Input validation for Date Picker components

Date Picker components now validate the input date. Invalid input is highlighted in red.



Filter by Time:

Created on

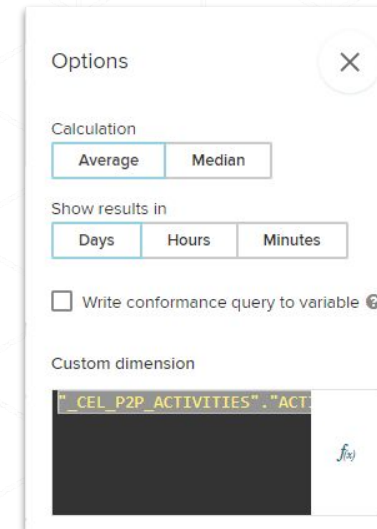
2020-13-03

YYYY-MM-DD

## Custom dimension for the Conformance Checker

Users can now provide a custom dimension in the Conformance Checker to measure the conformance of a column other than the default activity column.

This setting is accessible in the settings of the Conformance Checker or while "Mining the target process".



Options

Calculation

Average Median

Show results in

Days Hours Minutes

Write conformance query to variable

Custom dimension

"CEL\_P2P\_ACTIVITIES"."ACT

# Administration & security

# Audit logging to external databases

With release 4.7.2, we support audit logging to external databases to enable advanced analysis of the logging events.

You can find the required new properties in the `audit-logging-advanced.properties.sample` file in `<installDir>/component_configurations` after the update. If you are already using the advanced audit logs, you can copy the new properties into the existing `audit-logging-advanced.properties.sample` file.

**More information about the configuration of the advanced audit logs can be found in the Operation Guide 1.14.**

# User and group report

The new user and group report enables our customers to effortlessly export a list of the current users, groups, and group memberships. Therefore, this functionality targets audits, system assessments, and migrations to the Celonis EMS!

## **Content of the user and group report:**

- User overview
- Group membership overview
- Effective user role overview

**More information on how to retrieve the report can be found on [help.celonis.de](https://help.celonis.de) under *"User management & permission reports"*.**

# Permission report

In addition to the user report, a permission report can be generated. This report lists the content permissions (folder, analysis, data model) of every user and if access was granted on a user- or group level.

## **Content of the permission report:**

- Content overview
- Permitted users & groups
- Effective content permissions
- Project-specific information
- Effective user role overview

**More information on how to retrieve the report can be found on [help.celonis.de](https://help.celonis.de) under "*User management & permission reports*".**



# Authorization report

Lastly, an authorization report can be generated. This report lists authorization objects that have a manual value mapping (authorization objects querying databases are not taken into consideration here).

## Content of the authorization report:

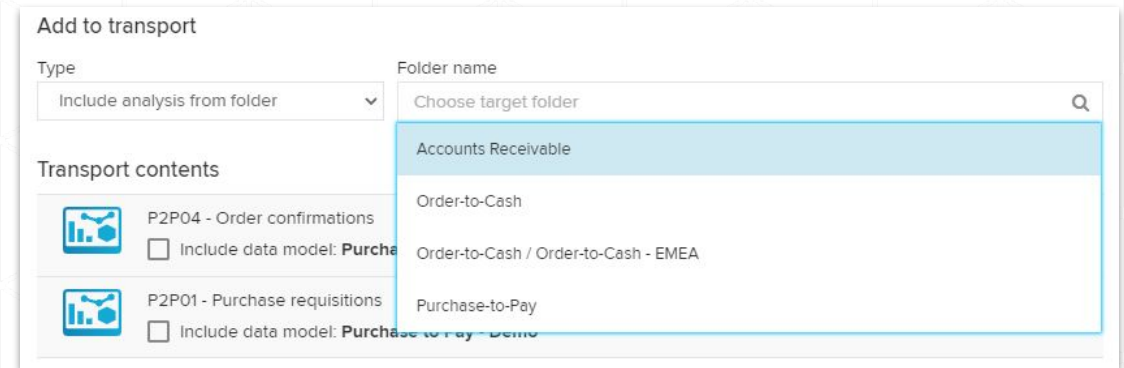
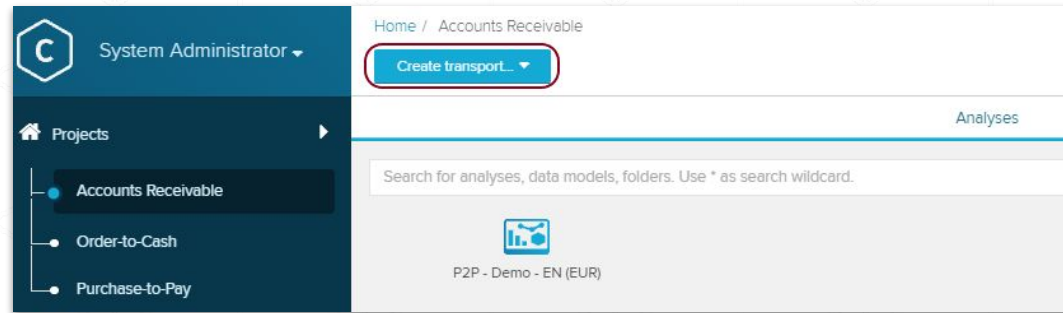
- All data models with authorization objects assigned to them (incl. information such as ID, name)
- Data model overview
- Affected users
- Authorization object overview (restricted to manual value mapping)
- Project-specific information

**More information on how to retrieve the report can be found on [help.celonis.de](https://help.celonis.de) under “*User management & permission reports*”.**

# Improved transport creation

In the new version, you can now create transports more efficiently. We added the options to directly include:

- all analyses from a selected folder
- all analyses from a selected folder and all of its subfolders
- all data models from a selected project
- all analyses and data models from a selected project



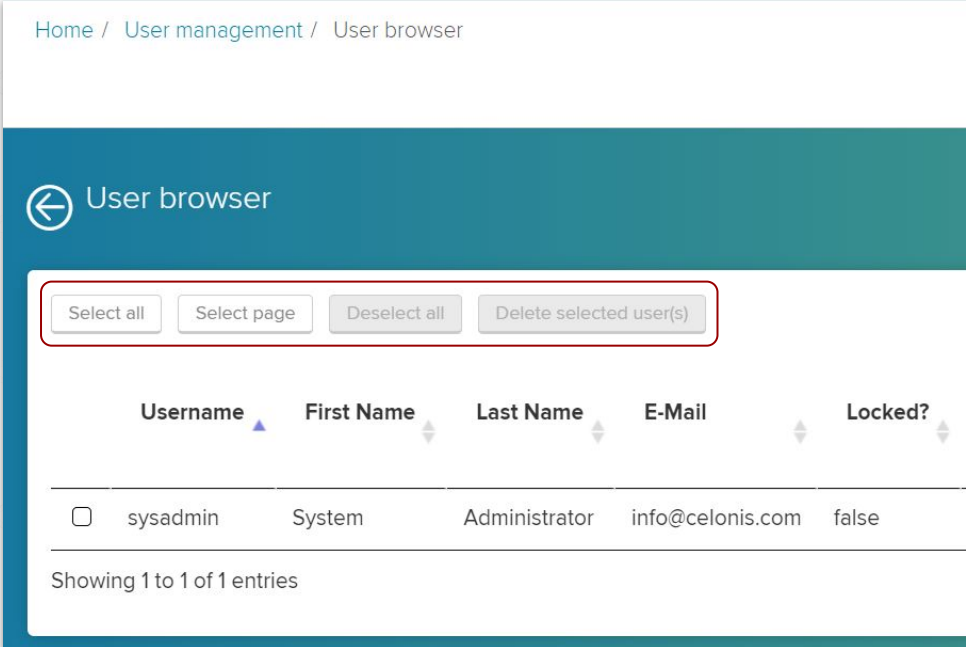
In addition to that, you can select the new transport creation options directly when viewing a folder or project.

# Bulk user deletion

Previously, it was cumbersome to delete large amounts of users from the front end. Therefore, we enabled bulk user deletions in the *User Browser*.

## The end user is now able to:

- Select all users
- Select all users on the current page
- Deselect all
- Delete all selected users



The screenshot shows the 'User browser' interface. At the top, there is a breadcrumb trail: 'Home / User management / User browser'. Below this is a teal header bar with a back arrow icon and the text 'User browser'. Underneath the header is a toolbar with four buttons: 'Select all', 'Select page', 'Deselect all', and 'Delete selected user(s)'. The 'Delete selected user(s)' button is highlighted with a red border. Below the toolbar is a table with columns: 'Username', 'First Name', 'Last Name', 'E-Mail', and 'Locked?'. The first row of the table contains the following data: an unchecked checkbox, 'sysadmin', 'System', 'Administrator', 'info@celonis.com', and 'false'. At the bottom of the table, it says 'Showing 1 to 1 of 1 entries'.

# Additional resources

# Help resources

celonis **Celopeers**

[www.celopeers.com](http://www.celopeers.com)

Community

Welcome to the Celonis Community

The purpose of this community is to create a space for exchange and support as we believe that everyone of you has valuable knowledge to contribute.

Enjoy learning, helping and sharing experiences!

[Celonis Homepage](#) | [Community Guidelines](#) | [How to use this Community](#)

Useful Links  
Access guidelines etc.

Public Forum Area  
used by customers and partners

Settings & Search  
Change your settings and find existing content

Latest Topics  
Newest discussions happening in the community



celonis **Help Page**

[help.celonis.de](http://help.celonis.de)

- ▼ Data Model Design
  - Join functionality
- ▼ Data Types
  - DATE
  - FLOAT
  - INT
  - STRING
- ▼ Functions
  - › Aggregation Functions
  - › Custom Functions
  - › DateTime Functions
  - › Descriptive Functions
  - › Machine Learning Functions
  - › Math Functions
  - › Predicate Functions
  - › Process Functions
  - › Statistic Functions
  - › String Functions

Example with two cases in which each activity is taken into account.

Query

Column1

```
PROCESS_ORDER("Table1"."ACTIVITY")
```

Input

CASE_ID : STRING	ACTIVITY : STRING	TIMESTAMP : DATE
-1	A	Sun Jan 01 2017 13:00:00.000
-1	B	Sun Jan 01 2017 13:01:00.000

Output

Result
Column1 : INT
1
2

World map

QuickStart

- You can use the worldmap to visualize geo locations of your process data
- You can explore data points and answer questions such as: 'Which vendors are close by and have a good on-time delivery rate?'
- You can compare regional differences and discover insights from local context

Overview

Process Mining 27% of 27% cases selected 100%

Worldmap

celonis

Visualize geo locations of your process data

Worldmap (1) Worldmap (2) Worldmap (3) Worldmap (4)

The Celonis logo features the word "celonis" in a white, lowercase, sans-serif font. The letter "o" is partially obscured by a vibrant orange-red, irregularly shaped graphic element that resembles a flame or a drop. The background is a dark grey with a subtle, repeating geometric pattern of small, light grey diamonds.

celonis